

GEOMETRICAL AND BUILDING DRAWING

(Maximum Marks: 80)

(Time allowed: Three hours)

*(Candidates are allowed additional 15 minutes for **only** reading the paper.*

*They must **NOT** start writing during this time.*

*Answer **all** questions.*

The intended marks for questions are given in brackets [].

SECTION A

LANGUAGE: 40 Marks

Read carefully the following notes before commencing:

- (i) All dimensions are in millimetres.
- (ii) Drafting should be accurate, neat and clear.
- (iii) The drawing must be done in pencil, clearly dimensioned and annotated.
- (iv) Wherever dimensions are not given, adopt suitable dimensions.
- (v) Write your unique identification number (UID) and index number at the bottom right-hand corner of your paper.

Question 1

[20]

Draw free-hand sketches to illustrate the following terms and give definitions:

- (i) Combined Footing
- (ii) Inverted Arched Foundation
- (iii) Nosing
- (iv) Baluster
- (v) Jamb

Question 2

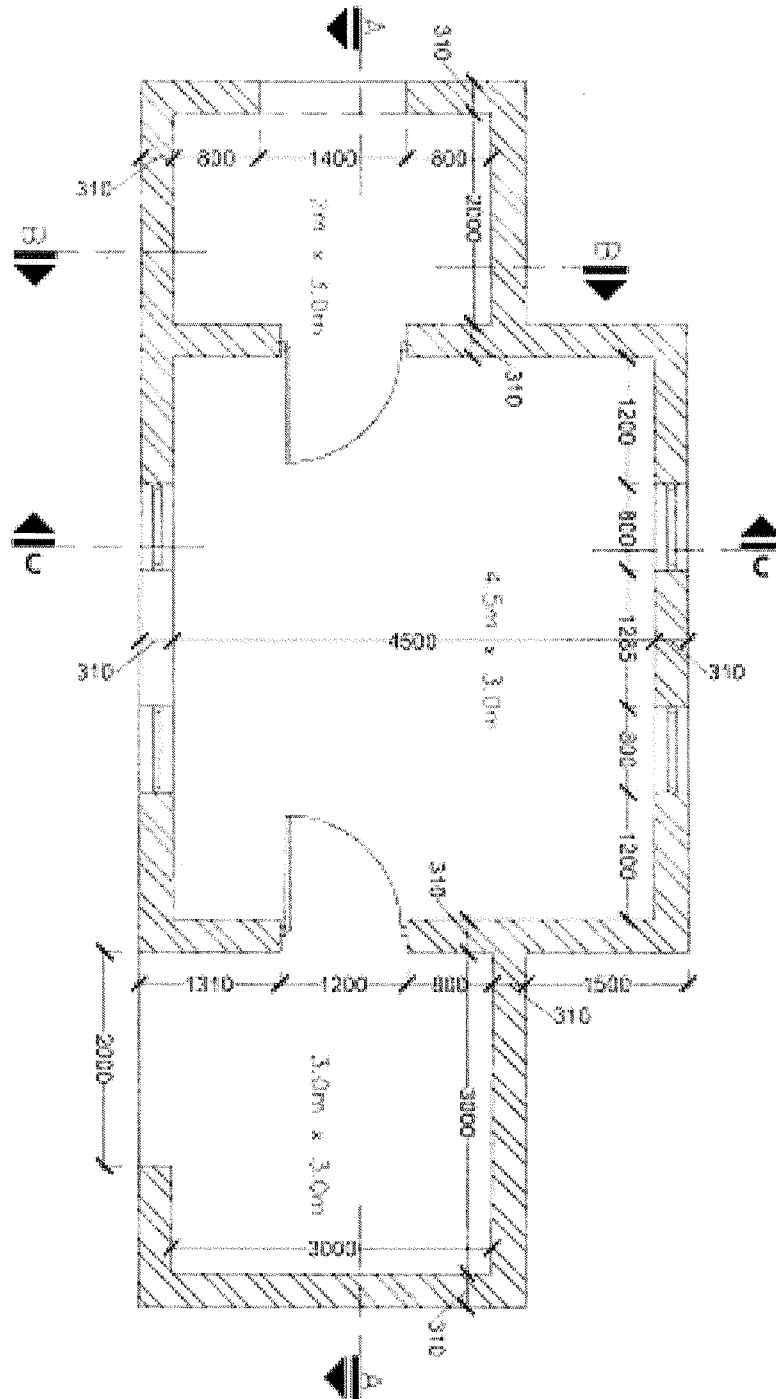
[30]

Draw Plan and Elevation of a Dog-legged staircase to 1:10: scale. Width of the staircase is 2000 mm and height of the respective floor shall be 3000 mm. Calculate the number of Treads and Risers accordingly.

Question 3

[30]

Choose any Section amongst the three Section Lines given in the *Figure* below. Draw the Section showing all the details from foundation to parapet wall to suitable scale. The section should indicate single storey buildings with flat RCC roof.



Figure